



Flight Plan & Site Survey

Created using **RPAS Wilco**®

Reference No:	27B15A
Title:	Mactaquac Float Fly
Pilot Name:	
Pilot Certificate:	
Flight Start:	
Flight End:	
Flight Area (Latitude):	45° 57' 2.05" N (45.951)
Flight Area (Longitude):	66° 52' 48.68" W (-66.88)
Altitude - Radius:	Alt: 400 ft - Rad: 926.0 m (0.5 nm)
Classification:	UNCONTROLLED
FIR - Contact:	CZQM - 506-867-7173

Please ensure you received all required authorizations prior to flight.

Disclaimer

This Site Survey was created using RPAS Wilco by AIM Robotics. The flight plan contained is intended only for RPAS flights on the date/time and location specified. The user accepts all responsibility for the accuracy and completeness of the information contained.

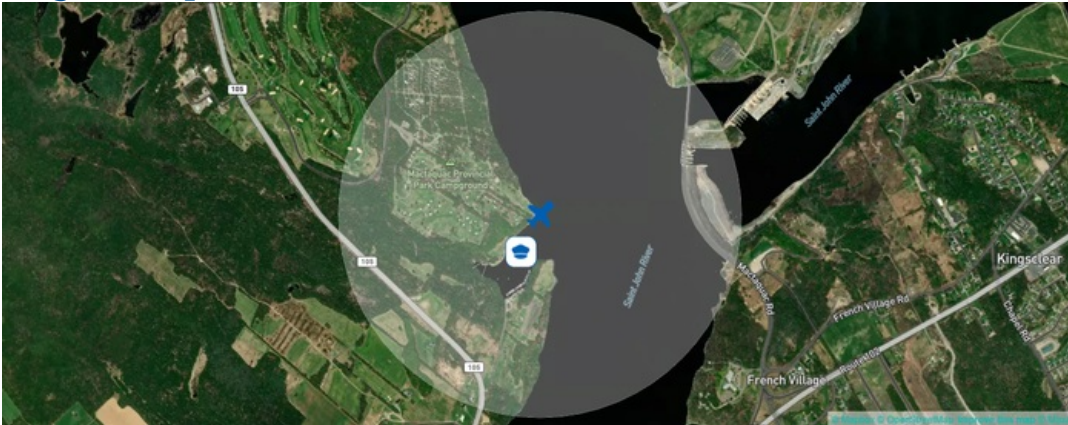
For the complete Terms & Conditions, see

<https://rpswilco.com/#/tnc>

Included

- Site Survey
- Obstacles (if available)
- Nearby Aerodromes



Flight Map



RPAS Specification

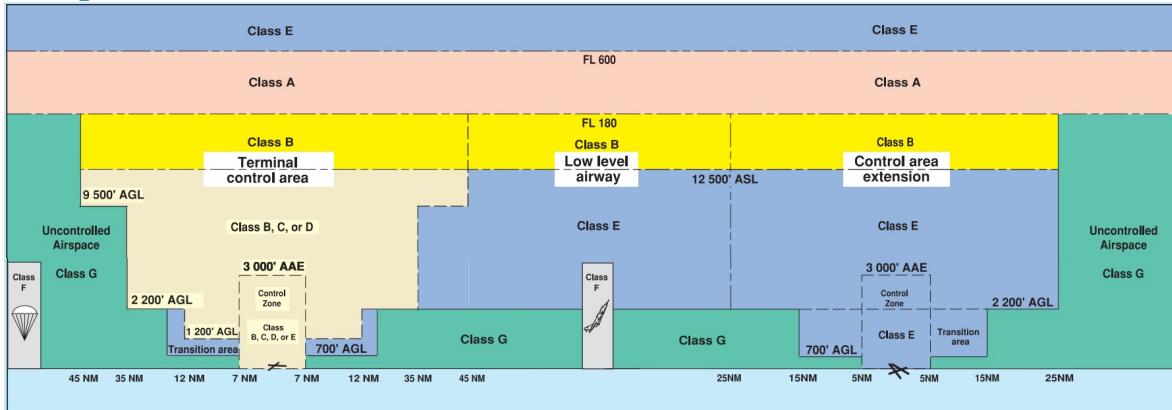
- **Manufacturer:**
MAAC
- **Model:**
MODEL AIRPLANE
- **Registration Number:**
- **Eligible for advanced operations:**
- **Manufacturer RPAS safety assurance:**
 - Controlled Airspace: N/A
 - Near People: N/A
 - Over People: N/A

MAP Details

	Latitude	Longitude
 MODEL	45° 57' 2.05" N (45.951)	66° 52' 48.68" W (-66.88)
 Pilot	45° 56' 56.51" N (45.949)	66° 52' 52.77" W (-66.8813)



Airspace Classification



Overlying Airspaces

Class	Name	Floor	Ceiling
B	CHARLO, NB CAE	12500MSL	18000MSL
E	CHARLO, NB CAE	2200AGL	12500MSL
E	T739 Airway	2200AGL	12500MSL
B	T739 Airway	12500MSL	18000MSL
B	Fredericton, NB TA	12500MSL	18000MSL
E	Fredericton, NB TA	700AGL	12500MSL
E	T698 Airway	2200AGL	12500MSL
B	T698 Airway	12500MSL	18000MSL

Nearest Aerodromes & Distance from Operation

WEYMAN AIRPARK (CCG3 - AERODROME - Reg)	Lat: 46.038	Long: -66.859	9.859KM	5.32NM	N
SCOTTSFIELD AIRPARK (CCF9 - AERODROME - Reg)	Lat: 45.96	Long: -67.095	16.639KM	8.98NM	W
FREDERICTON (RCMP) (CRC2 - HELIPORT - Reg)	Lat: 45.932	Long: -66.667	16.613KM	8.97NM	E
FREDERICTON INTL (CYFC - AERODROME/HELIPORT - Cert)	Lat: 45.869	Long: -66.537	28.058KM	15.15NM	E
GAGETOWN (CYCX - HELIPORT - DND)	Lat: 45.838	Long: -66.437	36.511KM	19.71NM	E

NEW BRUNSWICK

AERODROME/FACILITY DIRECTORY

WEYMAN AIRPARK NB

CCG3

REF	N46 02 15 W66 51 32 17°W (2015) UTC-4(3) Elev 140' A5003	
OPR	David Bradley 506-450-4087 Reg PPR	
PF	B-1 C-2 D-3,4,5,6	
FLT PLN		
FIC	London 866-WXBRIEF (Toll free within Canada) or 866-541-4104 (Toll free within Canada & USA)	
ACC	(IFR only) Moncton 506-867-7177 or 866-480-8200.	
RWY DATA	Rwy 05/23 3000x80 SAND/GRVL/chip seal	
RCR	Opr No win maint	
COMM		
ATF	tfc 123.2 5NM 3100 ASL	
CAUTION	Glider activity Apr 15-Dec 15. Rwy may be soft during thaw. Scottfield Airpark aprx 12NM W, ATF 123.2.	

NEW BRUNSWICK

AERODROME/FACILITY DIRECTORY

SCOTTSFIELD AIRPARK NB

CCF9

REF	N45 57 37 W67 05 43 17°W (2015) UTC-4(3) Elev 600' A5003	
OPR	Ernie McLean 506-575-1910/8615 506-260-2932 Reg	
PF	B-1 C-2,3 D-3,4,5	
FLT PLN		
FIC	London 866-WXBRIEF (Toll free within Canada) or 866-541-4104 (Toll free within Canada & USA)	
ACC	(IFR only) Moncton 506-867-7177 or 866-480-8200.	
SERVICES		
OIL	15W50	
S	4,5	
RWY DATA	Rwy 05/23 2500x100 GRASS	
RCR	Opr No win maint First 400' each rwy soft in spring/fall	
COM		
ATF	tfc 123.2 5NM 3600 ASL	
CAUTION	Weyman Airpark aprx 12NM E, ATF 123.2.	

NEW BRUNSWICK

AERODROME/FACILITY DIRECTORY

FREDERICTON (RCMP) NB (Heli)

CRC2

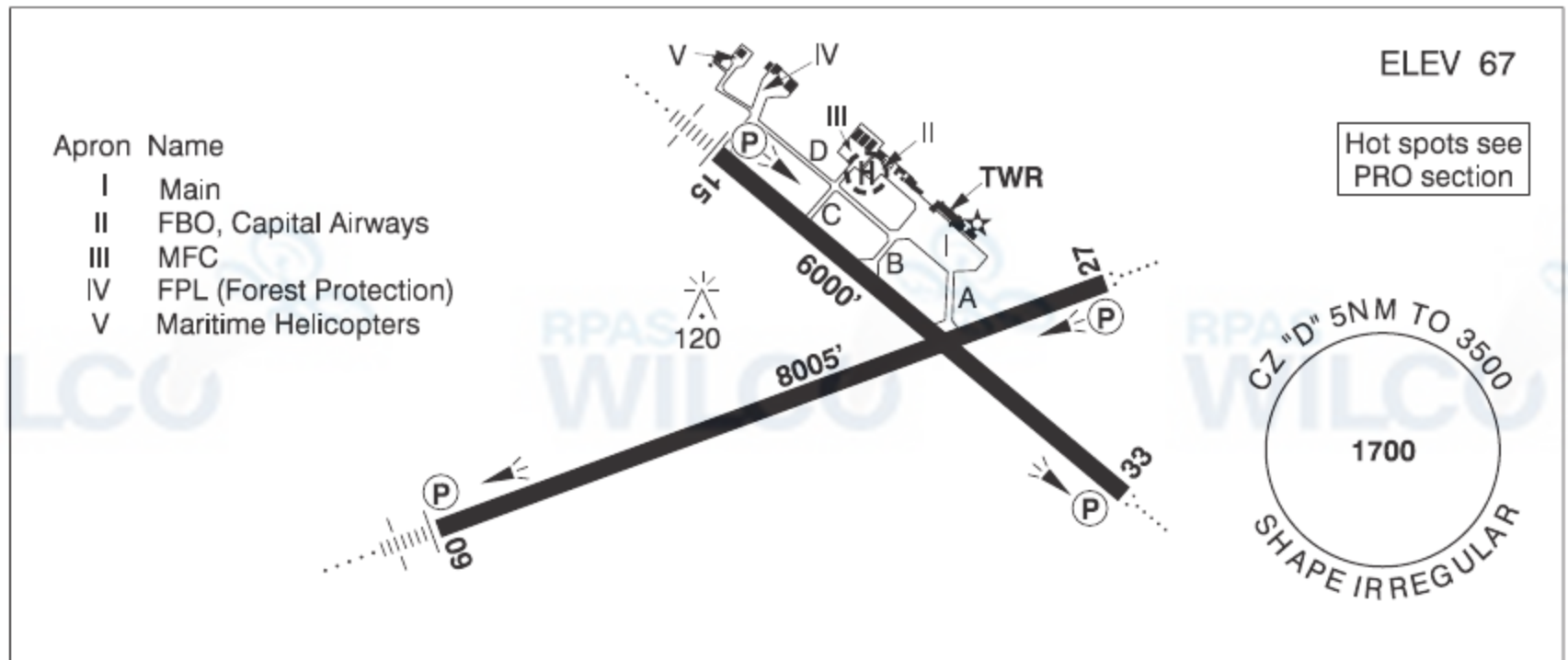
REF	N45 55 54 W66 40 00 Adj 18°W (2014) UTC-4(3) Elev 369' A5003	
OPR	RCMP 506-451-6050 Reg PPR	
FLT PLN		
FIC	London 866-WXBRIEF (Toll free within Canada) or 866-541-4104 (Toll free within Canada & USA)	
ACC	(IFR only) Moncton 506-867-7177 or 866-480-8200.	
HELI DATA	FATO/TLOF 77' x 77' ASPH	
LIGHTING	RF(FL) DR(LO) Arr/dep 150° fr heli	
COMM		
ATF	tfc 123.2 5NM 3400 ASL excluding Fredericton Intl CZ	
PRO	Arr/dep 150° & 313° fr heli. Ctc Fredericton TWR 119.0 1045-0345Z ‡ O/T Saint John rdo 119.0 prior to arr/dep to advise intentions.	

NEW BRUNSWICK

AERODROME/FACILITY DIRECTORY

FREDERICTON INTL NB

CYFC



REF	N45 52 08 W66 32 14 7SE 18°W (2014) UTC-4(3) Elev 67' A5003 LO8 HI6 CAP OC
OPR	Fredericton International Airport Authority Inc. 506-460-0920 0845-0515Z† Cert
PF	A-1,2,3,6,7 C-4,5
CUST	AOE/55 (140 with staged off-loading) 12-04Z† 888-226-7277
FLT PLN	<p>FIG London 866-WXBRIEF (Toll free within Canada) or 866-541-4104 (Toll free within Canada & USA)</p> <p>ACC (IFR only) Moncton 506-867-7177 or 866-480-8200.</p> <p>WX METAR AUTO H24 WxCam TAF H24, issue times: 00, 06, 12, 18Z.</p>
SERVICES	Call out chg may be levied for one or more svcs
FUEL	100LL, JA-1 (FSII avbl), F-34, IP, HPR
OIL	15W50
S	1,2,4,6 Capital Airways
ARFF	DESIGNATED CAT 6 (CAT 7 4 hr PN) 0845-0515Z†
JASU	CE16 Capital Airways
PVT ADV	Capital Airways Inc. 122.87 506-446-3588 12-22Z† O/T PN 506-238-3653 call out chg. Air Canada Ground Handling 130.375 506-446-6133
MIL CON	Menzies Aviation/ASIG 1-506-470-2320
RWY DATA	Rwy 09(087°)/27(267°) 8005x200 ASPH Rwy 15(148°)/33(328°) 6000x150 ASPH
RWY CERT	Rwy 09 RVR 1200(1/4 sm)/Rwy 27 RVR 1200(1/4 sm) AGN V Rwy 15 RVR 1200(1/4 sm)/Rwy 33 RVR 1200(1/4 sm) AGN V
TWY CERT	Twy C AGN II Twy D AGN IIIB
TWY	Twy C uncontrolled NE of Twy D
HELI DATA	Parking Pad: 60' dia ASPH Max heli overall length 49'
RCR	Opr CRFI, win maint 0915-0400Z† PN for extended svc. PCN
LIGHTING	09-AN(TE HI) P2, 27-AO(TE HI) P2, 15-AN(TE HI) P2, 33-AO(TE HI) P2 ARCAL-119.0 type K (when twr closed)

NEW BRUNSWICK

AERODROME/FACILITY DIRECTORY

FREDERICTON INTL NB (Cont'd)

CYFC

COMM	<p>RCO Saint John rdo 119.0 PTC avbl (RAAS) 0345-1045Z† (emerg only 506-646-7223)</p> <p>ATIS 127.55 1045-0345Z† (O/T AWOS)</p> <p>GND 121.7 1045-0345Z†</p> <p>TWR 119.0 (E) 1045-0345Z† (emerg only 506-446-3420)</p> <p>MF Saint John rdo 119.0 0345-1045Z† 5NM 3500 ASL (CAR 602.98)</p> <p>PAL Moncton Ctr 124.3 135.5 270.8</p>
NAV	<p>DME IDC 111.3 Ch 50 N45 51 47 W66 32 52 (86')</p> <p>ILS IDC 111.3 (Rwy 09) RVR</p>
PRO	<p>Dep Rwy 15 turn as soon as practicable after tkof to remain clear of CYR724. Transponder MODE C required within the Fredericton CZ. Pilots should refer to Canadian Airport Charts (CAC) to obtain details on established hot spots, prior to operating on maneuvering areas. CAC are available for free on the NAV CANADA website.</p> <p>VFR ARR/DEP ROUTES: See FREDERICTON VTPC - TRAINING AREAS</p>
CAUTION	<p>RESTRICTED AREAS: Extv live firing in CYR724, 725 4NM SE of aprt.</p> <p>AIRSPACE: Gagetown Class "E" CZ 3.5NM SE to 3500 ASL.</p>

NEW BRUNSWICK

AERODROME/FACILITY DIRECTORY

GAGETOWN NB (Heli)

CYCX

REF	N45 50 16 W66 26 12 5SE 16°W (2022) UTC-4(3) Elev 166' A5003		ELEV 166
OPR	DND 506-422-2394 CSN 319-432-2394 Mil PPR		
FLT PLN	<p>FIC London 866-WXBRIEF (Toll free within Canada) or 866-541-4104 (Toll free within Canada & USA)</p> <p>ACC (IFR only) Moncton 506-867-7177 or 866-480-8200.</p> <p>MIL on site Ltd hrs</p> <p>WX Met brief for mil only. Lcl Met Section CSN 432-2613, JMC 1-800-WXMETEO (996-3836). (See COMM). METAR during mil flt ops. TAF dur mil flt ops, issue times depending on mil requirements.</p>		
PF	B-1 C-2,3,4,5		
SERVICES	403 Sqn svcg call "FIVE" 321.8 ltd hrs Mon-Fri exc hols		
FUEL	F-34		
OIL	156		
ARFF	CAT 2		
MIL ADV	403 Sqn Ops call "WOLF OPS" 321.8 ltd hrs Mon-Fri exc hols		
HELI DATA	150' x 150' Ctr of Pad N45 50.2 W66 26.2 Twy A 094°. Twy B 011°.		
LIGHTING	DR RY(HI) Non std		
COMM	<p>MF 126.4 263.3 (E) Gagetown advsy avbl 11Z-0300Z† Mon-Fri O/T ltd hrs. Opr dates & hrs may vary without notice</p> <p>PAL Moncton Ctr 124.3 135.5 270.8</p> <p>MIL 46.8FM call sign Flt Following ltd hrs 49.9FM call sign Rng Ctl</p>		
PRO	Over flt of built up area 1.0NM W of heli proh below 1000 AGL Autorotation area lctd 0.5NM NNE of helipad. Circuits for helipad are left hand or opposite to Autorotation circuit when Autorotation area active. Autorotation area only active when MFAU open. Due to close proximity to Fredericton Intl, Transit thru Burton Bridge for CYCX arr only, not auth for dep fr CYCX to CYFC. For transit to Rwy 27 at CYFC acft are to transit to the ammunition storage area (N45 51.05 W066 20.43). For transit to Rwy 09 at CYFC acft are to transit to the North Y (N45 49.05 W066 24.86). For VFR practice approach COPTER RNAV (GNSS) 249, published missed approach not authorized. Crews are to contact Mtc Ctr (124.3) prior to commencing the VFR practice approach for traffic advisories and monitor CYFC Twr (119.0) during the VFR practice approach.		
CAUTION	<p>HELI TRAFFIC: Extv heli activity around Gagetown day & night.</p> <p>RESTRICTED AREAS: Live firing in CYR 724 & CYR 725. Unless specifically authorized remain clear.</p> <p>JET TRAFFIC: Presence of mil jet acft in the range often unannounced. Unsked dly radiosonde balloon launches with an ascent rate of 1000 ft/min in the vic of Heli.</p>		